

# Kindergarten ELA Pre- & Post-Assessment



Student Name: \_\_\_\_\_

Note for Tutors (Please Read!)

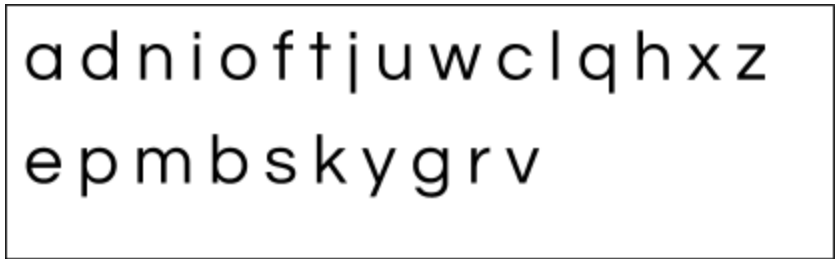
Please use the following guidelines to ensure accuracy:

- Your student must answer ALL questions on this assessment.
- You CAN read the questions on this assessment to your student.
- You CANNOT help your student choose an answer.
- There is no time limit

REMINDER: Please enter your student's answers online to obtain a score! [schoolonwheels.org/assessments](https://schoolonwheels.org/assessments)



### 3) I can name my lowercase letters



- Student can name lowercase letters.
- It's difficult for the student to complete this activity.
- The student has not learned this yet.

### 4) What rhymes with cat?

- a) Bat
- b) Kitten
- c) Both a and b
- d) The students has not learned this yet.

### 5) What rhymes with bug?

- a) Hug
- b) Big
- c) Drag
- d) The student has not learned this yet.

**6) What rhymes with hot?**

- a) Cap
- b) See
- c) Cot
- d) The student has not learned this yet.

**7) Show the student a grade appropriate book.**

**I can name the parts of a book:**

- Cover
- Title Page
- Beginning
- End
- Author
- Illustrator
- It was difficult for the student to complete this activity.
- The student has not learned this yet.



**STOP:** You're done! Please tell your tutor that you have completed the assessment and remind your tutor to **enter all of your answers online at [schoolonwheels.org/assessments](https://schoolonwheels.org/assessments)**. It is the only way to check your answers.