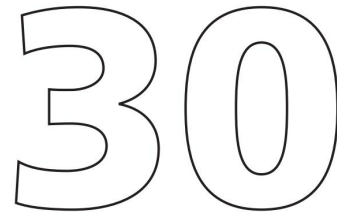
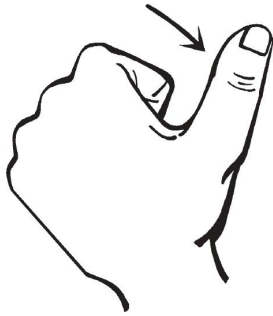


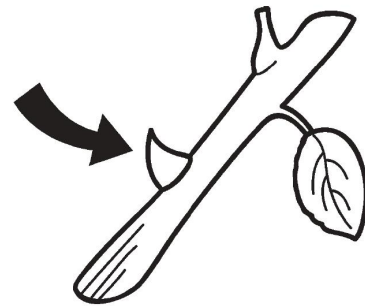
teeth



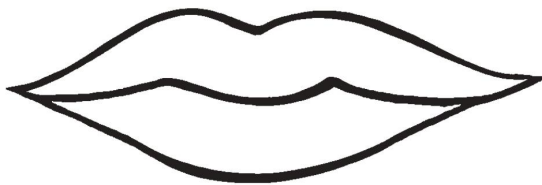
thirty



thumb




thorn



mouth



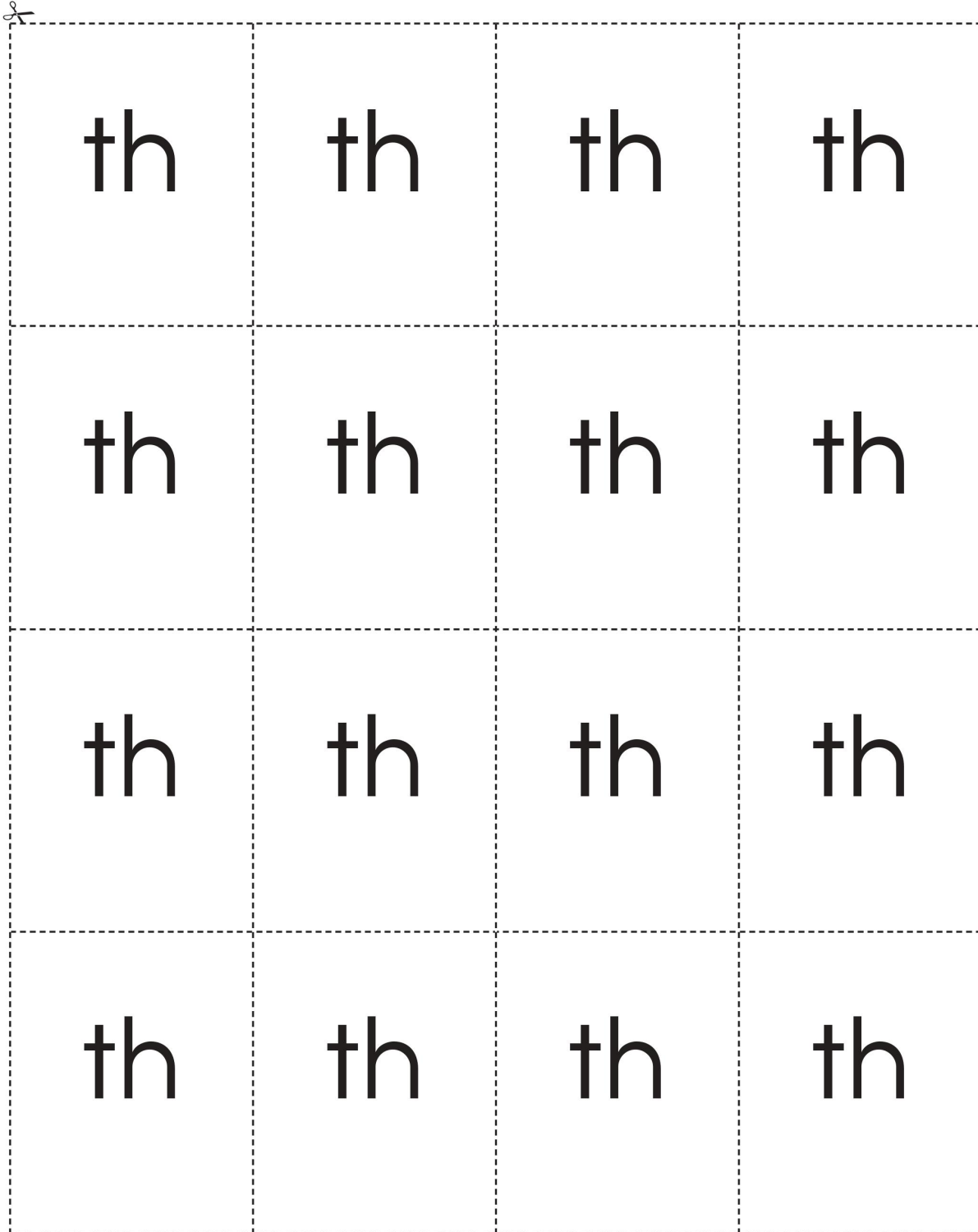
tooth



bath	math
thump	thin
path	moth
thud	cloth



froth	with
thick	thank
broth	




th th th th

th th th th

th th th th

th th th th

ath	oth
ick	ank
ump	



b	w	cl	d
fr	u	p	m
o	g	n	i
l	r	s	

Phonics
PRACTICE SHEET

<p>1 New words</p>	<p>Thad • thin • thick • Beth thank • bath • thump • thing</p>
<p>2 Reviewed words</p>	<p>step • most • yelled • splash crash • drip • shock • long • help</p>
<p>3 New h-f words</p>	<p>all • ask • away • both • them three • under</p>
<p>4 Reviewed h-f words</p>	<p>over • lived • have • every • was day • would • one • and</p>
<p>5 Phrases</p>	<p>Thad and Thelma's Seth the snake</p>
<p>6 Sentences</p>	<p>Seth slithered into Thad and Thelma's home. Thad was shocked, too.</p>

Letter/Digraph Workmat

Onset/Rime Workmat

Onset **Rime**
